

# Clearcutting Adirondack Park

## Near Pickwacket Pond



The above aerial photo shows recent forest clear-cutting near Pickwacket Pond in Adirondack Park in New York State and was taken on August 13, 2011 on a “scenic” flight from the town of Long Pond to the High Peaks area of the park.

Is this the future for the former Finch Pruyn timberlands in Adirondack Park that were purchased by the Nature Conservancy in 2007 “*with the understanding that selective logging, under strict environmental standards, would be allowed in some areas*”?

<http://green.blogs.nytimes.com/2010/12/30/new-york-state-buys-conservation-rights-for-89000-acres-of-forest/>

According to the Nature Conservancy the logging operations would be “*selective cutting” of trees on less than 10 percent of the land, considered sustainable, meaning they would minimize harm to water quality and the wildlife habitat, among other requirements.*”

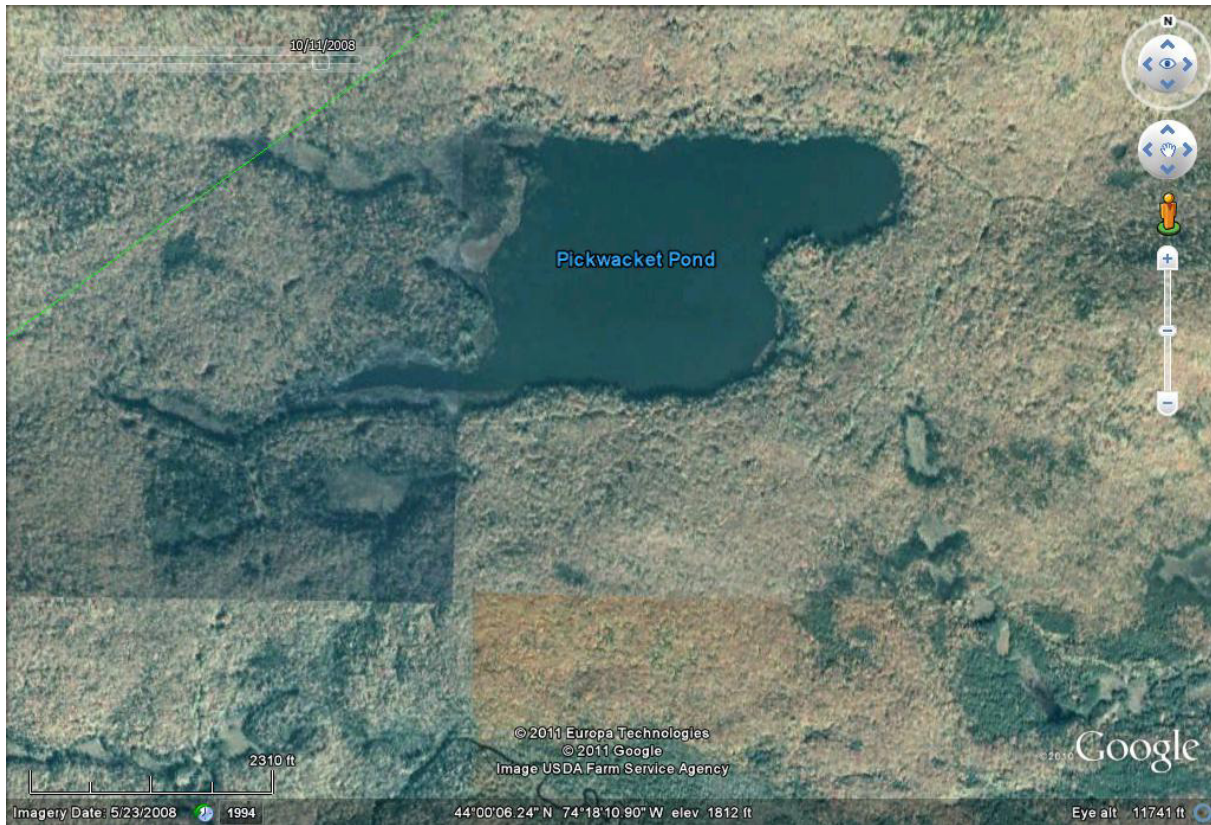
<http://www.nytimes.com/2009/03/31/science/earth/31adirondacks.html>

Here are the sale details according to the Nature Conservancy:

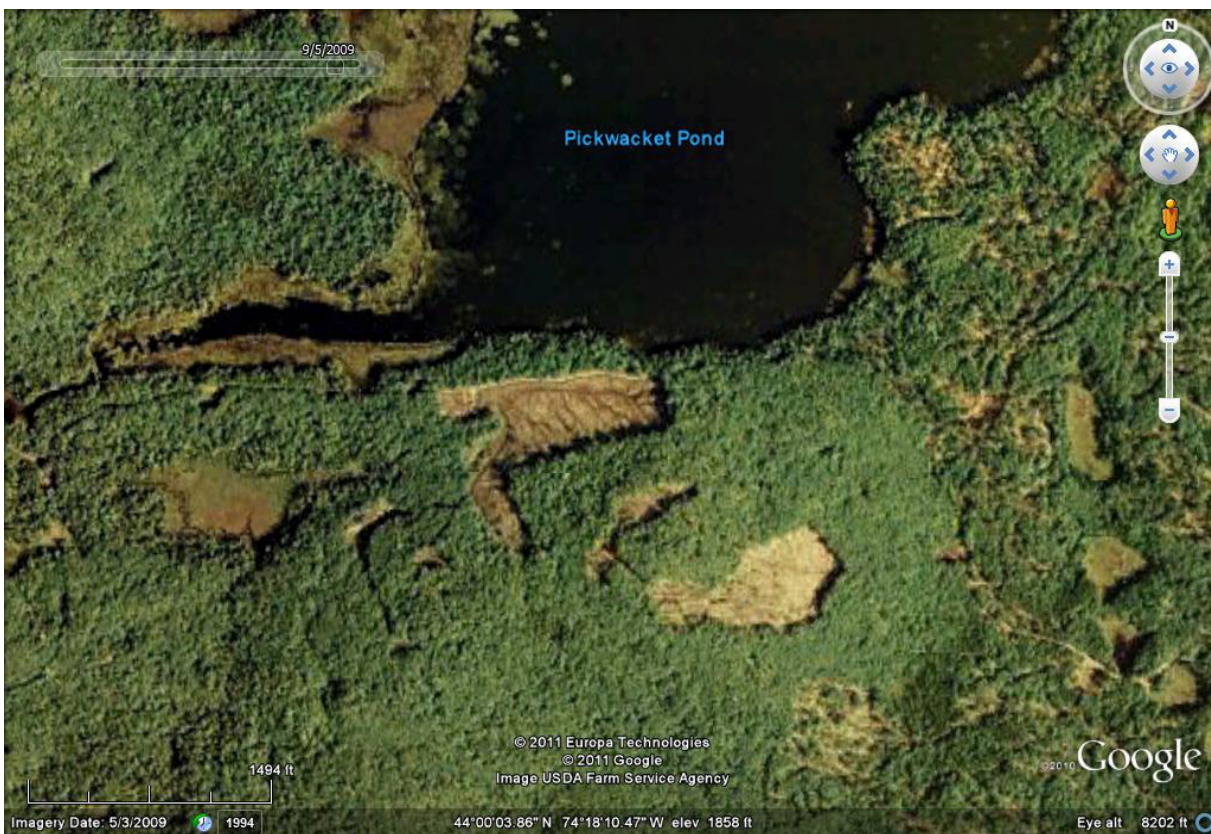
[www.nature.org/ourinitiatives/regions/northamerica/unitedstates/newyork/newsroom/the-nature-conservancy-announces-sale-of-adirondack-timberlands.xml](http://www.nature.org/ourinitiatives/regions/northamerica/unitedstates/newyork/newsroom/the-nature-conservancy-announces-sale-of-adirondack-timberlands.xml)



The following Google Earth Images show the progression of the clear-cutting near Pickwacket Pond in Adirondack Park, which occurred *after* these forestlands were purchased by the Nature Conservancy from the Finch Pruyn Company.

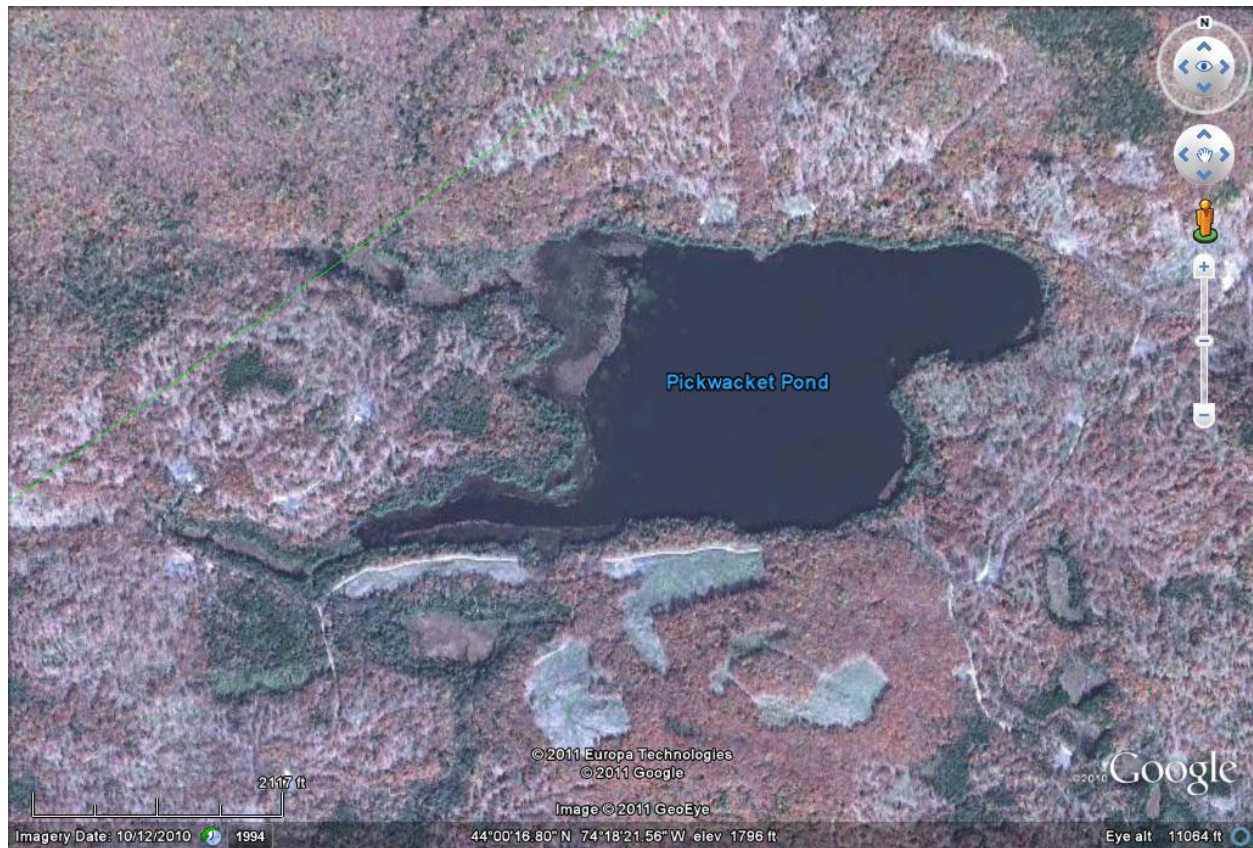


May 2008, No Clear Cutting



May 2009, Clearcutting Underway





October 2010, Clearcutting and other Logging Expands, Very Close to Pond



October 2010, Close-up View of Adirondack Park Clear-Cutting, near Pickwacket Pond



These critical forests in the heart of Adirondack Park have been described by the New York Department of Environmental Conservation as follows.

*“The former Finch, Pruyn lands, called by some the “jewel in the Adirondack crown,” are remarkable for their ecological diversity, astounding beauty and location in the heart of the Adirondack Park. Much of the land adjoins the protected Forest Preserve and the agreement will keep intact large expanses of ecologically and economically important forests, the benefits of which range from mitigating the impacts of climate change to enhancing the Adirondack Park's draw as a world-class tourist destination.”* <http://www.dec.ny.gov/lands/42077.html>

*“The former Finch holdings contain some of the wildest land remaining in the Adirondacks and, accordingly, are home to some of the state's most impressive plant and animal diversity. A biological survey conducted in 2001 found 95 significant plant species, 37 of which are rare in New York and 30 rare or uncommon in the Adirondacks. From the imperiled Bicknell's thrush to the striking scarlet tanager, many of the birds present need large swaths of contiguous forest to thrive.”*

Maybe these forests were in safer hands before being bought by the Nature Conservancy? Maybe that is not as crazy as it sounds considering the chairman of the Board of the Nature Conservancy, Roger Milliken, was a lobbyist for the timber industry in Maine before joining the Nature Conservancy, or that Mark Tercek was a managing director at Goldman Sachs before becoming president of the Nature Conservancy.

These media stories show what has been happening in other areas of these critical forests in Adirondack Park since they were purchased by the Nature Conservancy:

#### **Nature Conservancy loggers accused of damaging Adirondack trout stream:**

<http://www.northcountrypublicradio.org/news/story/17348/20110322/nature-conservancy-loggers-accused-of-damaging-adirondack-trout-stream>

<http://www.adirondackdailyenterpriser.com/page/content.detail/id/522730/When-green-goes-bad.html>

<http://www.adirondackdailyenterpriser.com/page/content.detail/id/523086/The-selling-of--green--and-the-facade-of-The-Nature-Conservancy.html?nav=5005>

<http://www.adirondackdailyenterpriser.com/page/content.detail/id/523680.html>

Here is a big and illuminating story on the Nature Conservancy in the Washington Post:  
[www.washingtonpost.com/wp-dyn/content/article/2007/06/26/AR2007062600803.html](http://www.washingtonpost.com/wp-dyn/content/article/2007/06/26/AR2007062600803.html)

There is no excuse for clearcutting these prime forests, particularly on lands purchased by an “environmental” group with promises of *“selective cutting” of trees on less than 10 percent of the land, considered sustainable, meaning they would minimize harm to water quality and the wildlife habitat, among other requirements.*”

Chris Matera, P.E.  
christoforest@maforests.org  
November 8, 2011

MASSACHUSETTS  FOREST WATCH  
[www.maforests.org](http://www.maforests.org)



# Clearcutting Adirondack Park – Near Blue Mountain

APPENDIX A - LAND OWNERSHIP UNKNOWN - October, 19, 2016



**“Before”  
May 2011**



**“After”  
Sept 2015**